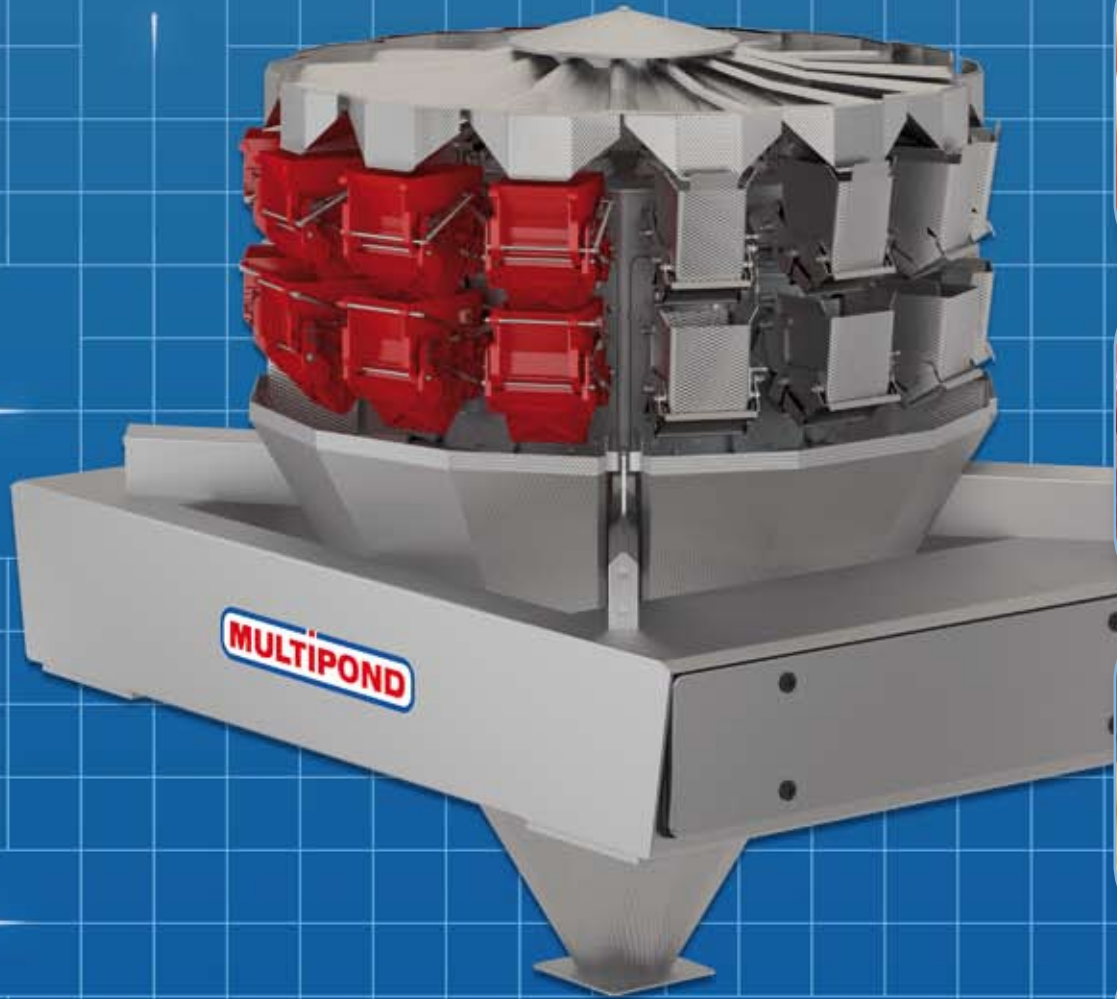


MULTIPOND

2400 series



MULTIPOND 2400 series multihead weigher, can be equipped with metal or plastic hoppers



Facts

- Up to 200 weighings per minute in combination mode
- Up to 300 weighings per minute in dosing mode
- Portion weights for individual dump: up to 1.500g / 3.000g
- Higher weights in large portion or multiple dump mode are possible
- Maximum accuracy
- Fully automatic calibration and taring
- Product-specific equipment
- Dust and water-repellent design
- Combining, mixing, counting and dosing applications

PRODUCTION PROVEN BENEFITS

reliable + accurate ...

Maximum accuracy and up time are guaranteed by high resolution, temperature compensated weigh cells with integrated calibration weights from our own manufacture. These are automatically calibrated at pre-programmed intervals during operation.

... less giveaway

custom-made + user-friendly + versatile ...

All product contact parts are available in a number of materials such as profiled or smooth plastic or metal to handle different product types. These are interchangeable and can be removed quickly and easily without tools for cleaning, changing products and maintenance. Control and operation of the weigher is via a user-friendly touch screen HMI (Human Machine Interface).

... less down time

automatic feed control ...

The 'intelligent' automatic feed control eliminates the need for adjustment by an operator for product condition change. Each radial feeder is automatically optimized to achieve the highest weighing efficiency based on product flow conditions.

... no operator intervention

flexible operating system ...

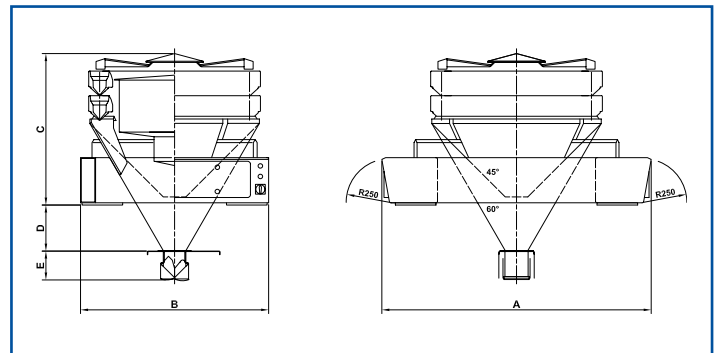
A windows-based operating system and standardized interfaces enable easy integration into the production process.

... seamless integration into the production process

special weigh hopper design ...

The double opening hopper flaps (bomb door) are designed for fast and clean discharge which is particularly good for depositing difficult and sticky products.

... higher output



Technical Data

Type	Number of weigh hoppers	Max. theoretical weighings per minute* (depending on product and target weight)
MP 10-2400/1250-H	10	80
MP 10-2400/2500-H		
MP 14-2400/1250-H	14	140
MP 14-2400/2500-H		
MP 16-2400/1250-H	16	160
MP 16-2400/2500-H		
MP 20-2400/1250-H	20	200
MP 20-2400/2500-H		

* in combination mode

Subject to change.

Machine Dimensions

MACHINE DIMENSIONS (dimensions for 15° distribution cones and 3l timing hoppers)					
A	B	C	D for 45°	D for 60°	E
1250	1790	1003	25	416	206
1250	1790	1003	35	475	206
1320	1860	1016	73	505	206
1610	2150	1016	183	690	206

Subject to change.

MULTIPOND headquarters and manufacturing facilities:

MULTIPOND Wägetechnik GmbH

Traunreuter Straße 2-4 ▪ 84478 Waldkraiburg ▪ Germany ▪ Tel.: +49 (0) 86 38 - 961 - 0 ▪ Fax: +49 (0) 86 38 - 961 - 111 ▪ info@multipond.com

MULTIPOND sales and service:

MULTIPOND s.a.r.l.

Parc d'Activité de la Maison Neuve
44360 Vigneux de Bretagne
France
Tel.: +33 - 2 40 57 30 10
Fax: +33 - 2 40 57 30 17
info@multipond.fr

MULTIPOND Benelux B.V.

Boven Zijde 10
5626 EB Eindhoven
The Netherlands
Tel.: +31 - 40 - 26 28 090
Fax: +31 - 40 - 26 28 099
info@multipond.nl

MULTIPOND America Inc.

225 Packerland Drive
Green Bay, WI 54303
United States of America
Tel.: +1 - 920 - 490-8249
Fax: +1 - 920 - 490-8482
sales-us@multipond.com

MULTIPOND Ltd.

20, St. Johns Road
Tylers Green, Penn
Buckinghamshire HP10 8HW
United Kingdom
Tel.: +44 - 1494 - 81 66 44
Fax: +44 - 1494 - 81 62 06
info@multipond.co.uk